

FRAMCOLOR Eclectic CARE

- ✓ COLOR WITHOUT AMMONIA
- ✓ Up to 100% of grey hair covered
- ✓ Bright colors for natural effects or light contrasts

- ✓ Lightening power up to 3 shades
- ✓ Anti-age effect (AGE-PREVENTION TECHNOLOGY)
- ✓ Countless color mix possibilities with Framcolor Eclectic demi-permanent

NATURAL	GOLD	ORANGE	RED	BEIGE	CHOCOLATE	COFFEE	ASHES	PEARL	COOL BROWN	PURPLE
---------	------	--------	-----	-------	-----------	--------	-------	-------	------------	--------

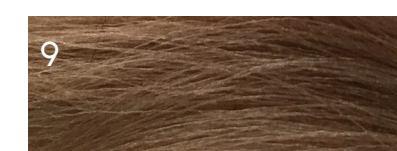
Level

10

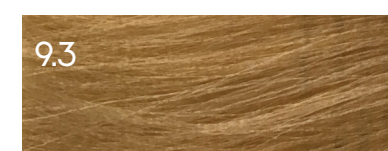


10.61
Silver Blonde

9



9
Very Light Blonde



9.3
Very Light Golden Blonde

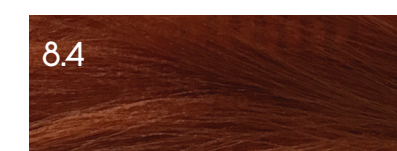


9.16
Pearl Blonde

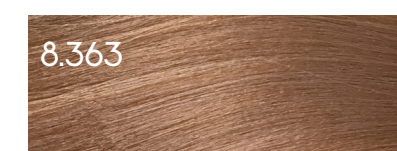
8



8
Light Blonde



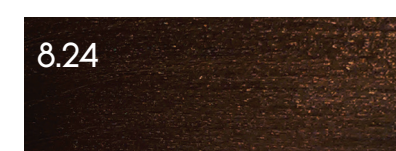
8.4
Light Copper Blonde



8.363
Light Blonde Warm Beige



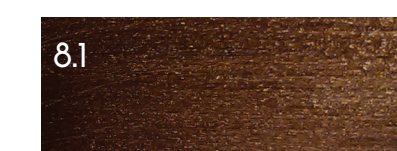
8.262
Light Blonde Cool Beige



8.24
Milk Chocolate



8.25
Light Coffee Blonde

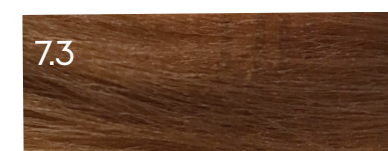


8.1
Light Ash Blonde

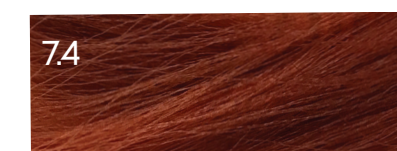
7



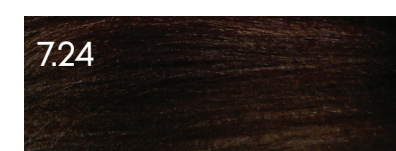
7
Medium Blonde



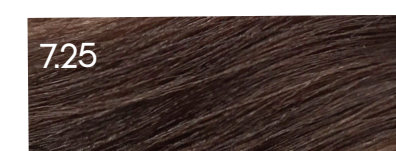
7.3
Medium Golden Blonde



7.4
Medium Copper Blonde



7.24
Medium Chocolate



7.25
Medium Coffee Blonde



7.1
Medium Ash Blonde

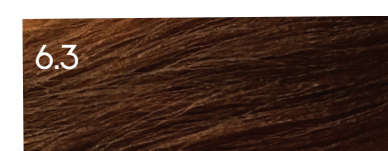


7.26
Cool Medium Blonde

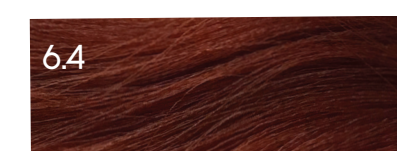
6



6
Dark Blonde



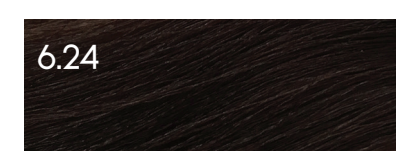
6.3
Dark Golden Blonde



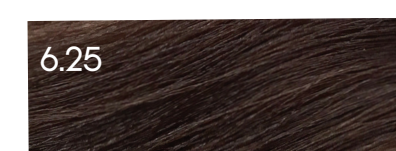
6.4
Dark Copper Blonde



6.5
Vibrant Red



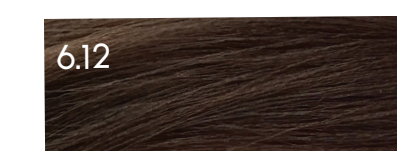
6.24
Dark Chocolate



6.25
Dark Coffee Blonde



6.1
Dark Ash Blonde



6.12
Cool Dark Blonde

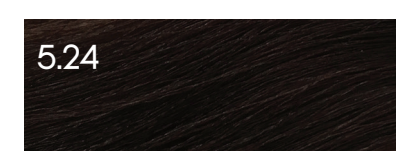
5



5
Light Brown



5.5
Fiery Red



5.24
Extra Dark Chocolate



5.25
Light Coffee Brown



5.6
Intense Violet

4



4
Medium Brown



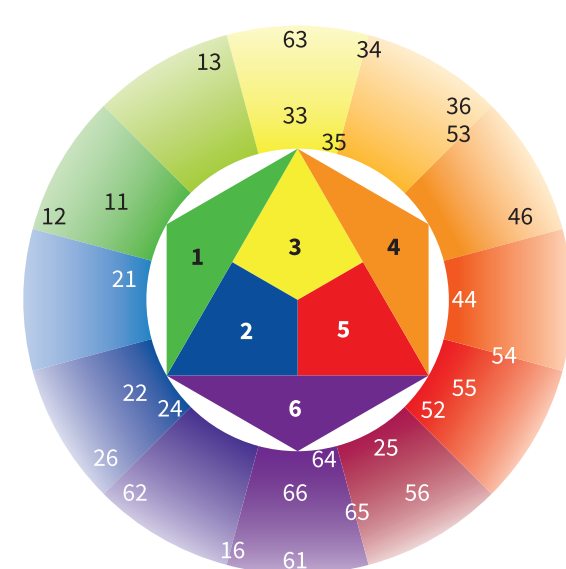
4.25
Medium Coffee Brown



4.6
Deep Violet



4.26
Violet Blue



DIRECTIONS FOR USE:

- Prepare the color mixture immediately before use.
- The developer with which FRAMCOLOR ECLECTIC CARE has to be diluted to prepare the coloring mixture can be: FRAMESI PROFESSIONAL ACTIVATOR.
- The ratio between FRAMCOLOR ECLECTIC CARE and the developer must always be 1:2.
- The choice of developer volumes depends on the desired result.
- Processing time is 35 minutes for all the shades.

