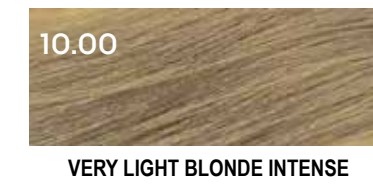


- ✓ Fast Pigmentation Process Technology
- ✓ Up to 100% of grey hair covered
- ✓ 20 minutes processing time (longer times do not darken the result)
- ✓ Permanent color
- ✓ With extract of liquorice

| | | | | | | | | | | | | | | |
|-----------------|--------------|------|-----------|----------|-------------|--------|-------|-------------|----------|----------------|-----------------|----------|--------------|-------------|
| INTENSE NATURAL | FROZEN BROWN | MOKA | COOL GOLD | HAZELNUT | SANDY BEIGE | COPPER | AMBER | RED NATURAL | DEEP RED | EXTREME VIOLET | MOTHER OF PEARL | PLATINUM | INTENSE GOLD | BLUE QUARTZ |
|-----------------|--------------|------|-----------|----------|-------------|--------|-------|-------------|----------|----------------|-----------------|----------|--------------|-------------|

Level

10



10.00
VERY LIGHT BLONDE INTENSE



10.66
VIOLET PLATINUM-BLONDE



10.62
MOTHER OF PEARL BLONDE



10.21
PLATINUM FROZEN ICE BLONDE



10.31
PLATINUM COOL GOLD BLONDE



10.26
PLATINUM ICE PEARL BLONDE



10.33
INTENSE GOLD

9



9.00
ULTRA LIGHT BLONDE INTENSE



9.036
ULTRA LIGHT BLONDE SANDY BEIGE

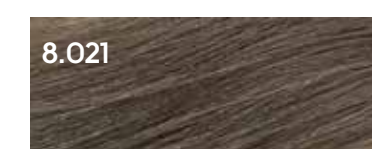


9.022
VERY LIGHT BLONDE BLUE QUARTZ

8



8.00
LIGHT BLONDE INTENSE



8.021
LIGHT BLONDE FROZEN BROWN



8.024
LIGHT BLONDE MOKA



8.031
LIGHT GOLD COOL



8.035
LIGHT HAZELNUT BLONDE



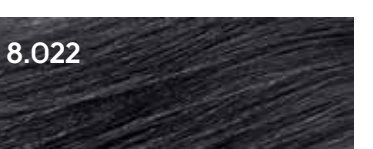
8.036
LIGHT BLONDE SANDY BEIGE



8.044
LIGHT RED COPPER



8.046
LIGHT AMBER BLONDE

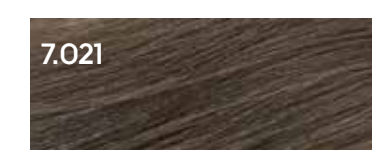


8.022
LIGHT BLONDE BLUE QUARTZ

7



7.00
MEDIUM BLONDE INTENSE



7.021
MEDIUM BLONDE FROZEN BROWN



7.024
MEDIUM BLONDE MOKA



7.031
MEDIUM GOLD COOL



7.035
MEDIUM HAZELNUT BLONDE



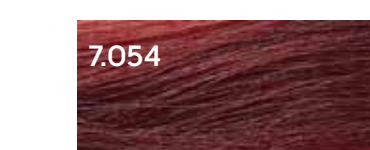
7.036
MEDIUM BLONDE SANDY BEIGE



7.044
MEDIUM RED COPPER



7.046
MEDIUM AMBER BLONDE



7.054
MEDIUM RED NATURAL

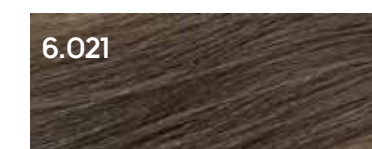


7.022
MEDIUM BLONDE BLUE QUARTZ

6



6.00
DARK BLONDE INTENSE



6.021
DARK BLONDE FROZEN BROWN



6.024
DARK BLONDE MOKA



6.031
DARK GOLD COOL



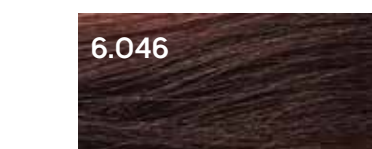
6.035
DARK HAZELNUT BLONDE



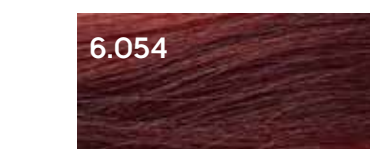
6.036
DARK BLONDE SANDY BEIGE



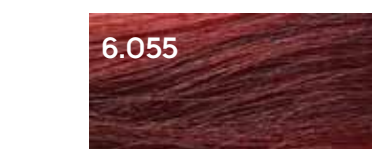
6.044
DARK RED COPPER



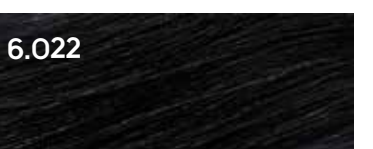
6.046
DARK AMBER BLONDE



6.054
RED NATURAL



6.055
DEEP LIGHT RED



6.022
DARK BLONDE BLUE QUARTZ

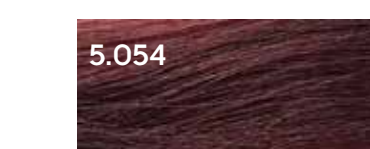
5



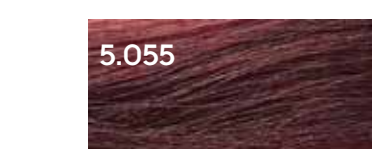
5.00
LIGHT BROWN INTENSE



5.024
LIGHT BROWN MOKA



5.054
DARK RED NATURAL

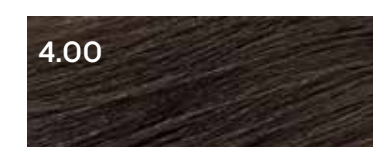


5.055
DEEP RED



5.066
EXTREME LIGHT VIOLET

4



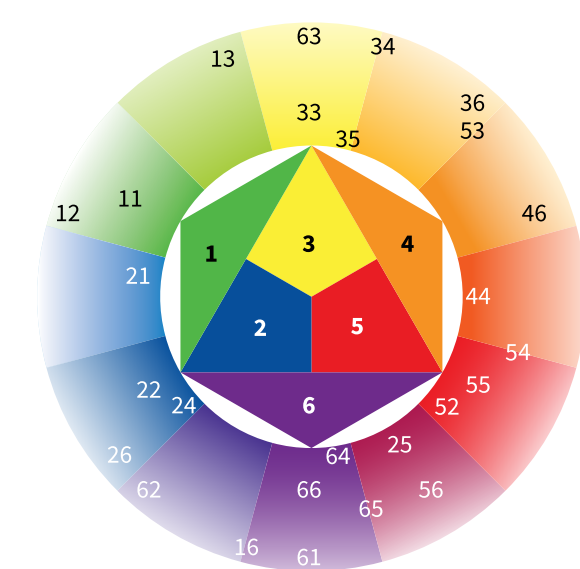
4.00
MEDIUM BROWN INTENSE



4.024
MEDIUM BROWN MOKA



4.066
EXTREME DARK VIOLET



DIRECTIONS FOR USE:

- Prepare the color mixture immediately before use.
- The developer with which FRAMCOLOR 2001 INTENSE has to be diluted to prepare the coloring mixture is FRAMESI PROFESSIONAL ACTIVATOR.
- The ratio between FRAMCOLOR 2001 INTENSE and the developer must always be 1:2.

